

ABOUT AA

AA can be found almost everywhere, almost all the time – in more than 115,000 groups throughout the world. We welcome opportunities to cooperate with others who are providing help to alcoholics. A.A. can be contacted on 0800 229 6757 or visit us at www.aa.org.nz

In 2016 almost 700 AA members from New Zealand participated in a survey of the membership. Alcoholics Anonymous NZ conducted this survey to keep members informed on current trends in membership characteristics. The survey also provides information about AA to the professional community and to the general public as part of AA's purpose to carry our message to those who still suffer from alcoholism.

GENDER OF MEMBERS



53%
Men



47%
Women

COMPOSITION OF MEMBERSHIP

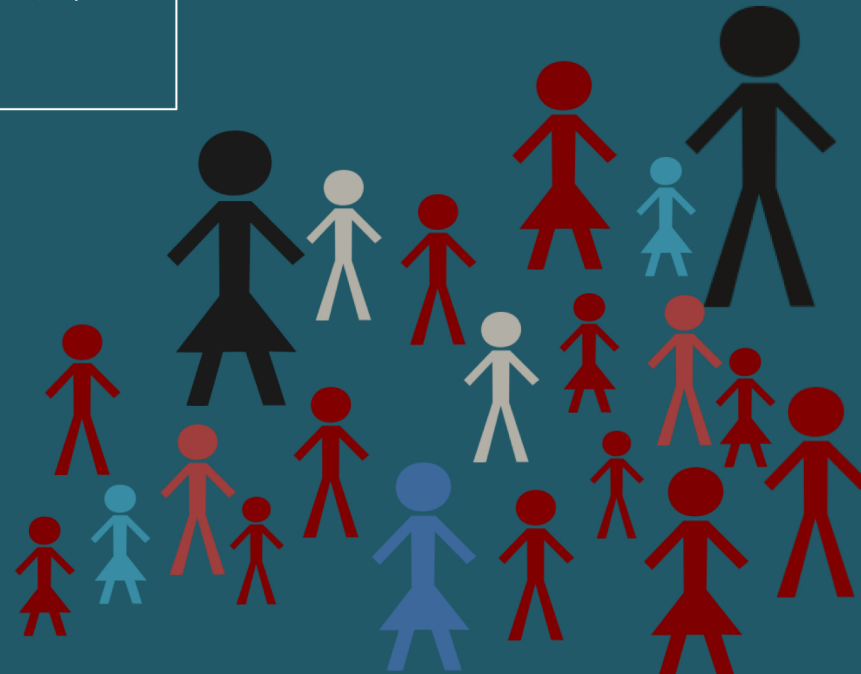
NZ European/ Pakeha 82%
Maori 8%
Indian 1%
Pacific Islander 1%
Other 8%



AA PREAMBLE

Alcoholics Anonymous is a fellowship of men and women who share their experience, strength and hope with each other that they may solve their common problem and help others to recover from alcoholism. The only requirement for membership is a desire to stop drinking. There are no dues or fees for AA membership; we are self-supporting through our own contributions. AA is not allied with any sect, denomination, politics, organization or institution; does not wish to engage in any controversy, neither endorses nor opposes any causes. Our primary purpose is to stay sober and help other alcoholics to achieve sobriety. Copyright © AA Grapevine, Inc.; reprinted with permission

ALCOHOLICS ANONYMOUS NEW ZEALAND MEMBERSHIP SURVEY



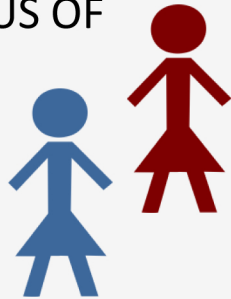
This is AA General Service Conference-approved literature.

AGE OF MEMBERS

Under age 21	0%
Age 21 to 29	6%
Age 30 to 39	8%
Age 40 to 49	25%
Age 50 to 59	25%
Age 60 or older	36%

MARITAL STATUS OF MEMBERS

Married	47%
Single	18%
Widowed	4%
Divorced	8%
Separated	5%
Domestic partnership or civil union	17%
Other	1%



INTRODUCTION TO AA

Through an AA member	25%
Treatment facility	22%
Self-motivated	23%
Family	10%
Judicial System	1%
Counselling agency	4%
Health professional	5%
Employer or fellow worker	3%
Non-A.A. friend or neighbour	2%
Correctional facility	1%
Spiritual advisor/ member of clergy	1%
AL Anon or Alateen	1%
Internet	1%
Other	8%



78% OF MEMBERS HAVE A SPONSOR

GROUP MEMBERSHIP

91% of members belong to a home group

MEMBER'S OCCUPATIONS

21% retired
6% beneficiary
11% management
5% business and financial operations
10% professional / technical
4% health professional
5% sales worker
6% educator
5% community worker
5% office and administrative support
5% arts, design, sport, media
17% other

LENGTH OF SOBRIETY

Sober less than 1 year	6%
Sober between 1-5 years	14%
Sober between 5-10 years	18%
Sober between 10-20 years	24%
Sober 20 years plus	38%

MEETING ATTENDANCE PER WEEK

One a week	28%
One to three	52%
Four to seven	11%
Other	9%



ADDITIONAL HELP...

BEFORE coming to AA 52% of the members received some type of treatment or counselling (such as medical, psychological, spiritual, etc.) related to their drinking.

AFTER coming to AA 63% of the members received some type of treatment or counselling (such as medical, psychological, spiritual, etc.) related to their drinking.

